

Nakamoto&Company

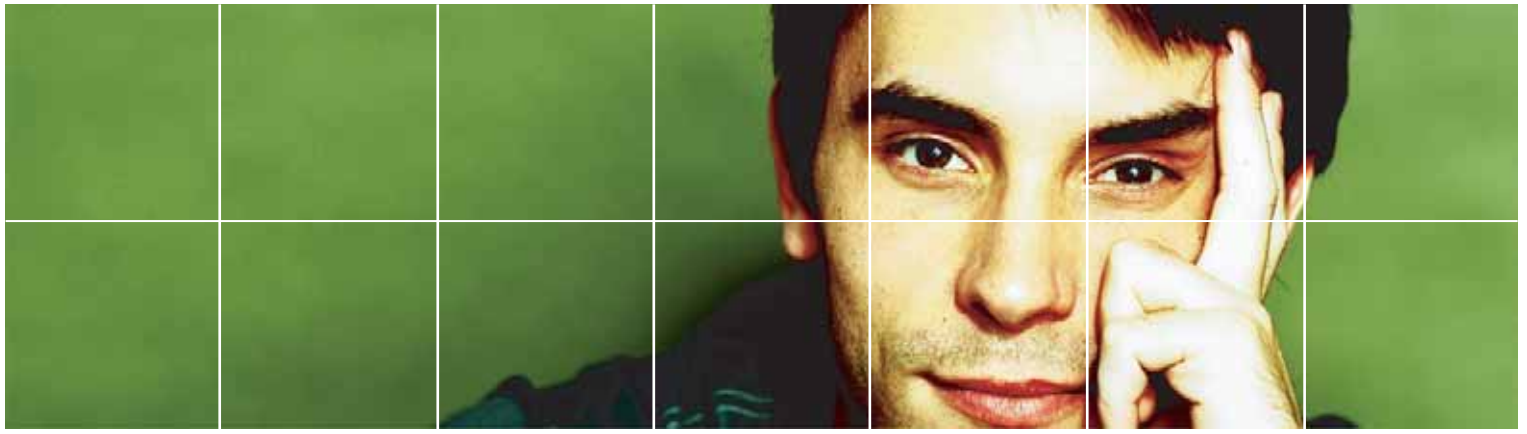
Accounting & HR Outsourcing Services

One Stop

Incorporation
Accounting Outsourcing
Human Resource Administration
Tax Return and Strategy



<http://www.nakamotokaikei.com>



Unlocking Your Potential.

Achieving and maintaining client satisfaction continues to be among Nakamoto & Company's highest priorities. Our CPAs and other professionals strive to serve clients by gaining a deep understanding of their goals, expectations, and desires.

OneStop INCORPORATION

■ More than just paperwork

The Japanese government has simplified the rules and regulations for incorporation, thus making it easier for entrepreneurs to incorporate their businesses. However, positive results are difficult to achieve without professional advice and assistance.

■ Legal Benefits for New Companies

Nakamoto & Company does more than just incorporate new businesses. It also keeps its clients informed of tax breaks and other benefits that the government provides to new companies.

■ Affordable Rates

Although there are many aspects to the incorporation process, a significant part of it involves standardized forms. Nakamoto & Company helps cut costs by handling such forms at affordable rates.

OneStop ACCOUNTING OUTSOURCING

■ Unlocking Our Clients' Potential

Nakamoto & Company distinguishes itself through its bilingual, professional staff. To unlock our clients' potential, our employees provide customized advice and assistance. With Nakamoto & Company, businesses receive professional and reliable accounting services at rates lower than the cost of maintaining a full-time, in-house accounting team.

■ Responding to Clients' Needs

Listed below are the general services we offer. However, as Nakamoto & Company caters to the individual needs of each client, we will gladly discuss with you any particular concerns and requests.

- Bookkeeping
- Reporting
- A/P Management
- Expense Reimbursement
- Bank Remittance
- Fixed Asset Management
- A/R Management
- Billing
- Inventory Control
- Computation
 - SAP R3
 - Oracle EBS
 - People Soft



PROFILE:

Firm Name: Nakamoto & Company

Founded: 1992

Operation: Tokyo, Osaka

Representative: Eiko Nakamoto (CPA)

Staff: 18





OneStop 

HUMAN RESOURCE ADMINISTRATION

■Management Pitfalls

Compliance with the law is key in HR Administration. Businesses must navigate through a maze of labor laws, tax laws, and social insurance programs. In many cases, because businesses juggle the various tasks in HR Administration, proper attention is not given to corporate compliance. Nakamoto & Company employs knowledgeable accountants who are adept at helping customers minimize risks, maximize productivity, and comply with regulations.

- Payroll
- Social Insurance Affaires
- Visa
- Control of Work Time Report
- Office Rules
- Employment Contract

■Employer Power and Responsibilities

Like their European counterparts, Japanese employers must adhere to employee-driven regulations that are quite different from the employer-driven ones in the United States. For example, Japanese employers have limited power to lay off employees and, by law, must pay a percentage of each employee's social insurance contribution.

OneStop 

TAX RETURN AND STRATEGY

■Finding the Best Way

Nakamoto & Company is a group of experienced professionals providing a wide range of tax consulting services. Our local and global tax strategies facilitate the design of efficient and customized modes of operation for our clients, of which 50% are international companies. By drawing on the strong communication skills of our bilingual professionals, Nakamoto & Company is dedicated to helping clients reach their business goals.

■Local Strategies

With tax authorities subjecting foreign companies to increasing scrutiny, we attach great importance to protecting our clients' financial interests. Our goal is to provide customized tax services and ensure that the tax returns we submit are error-free. In addition, we file more than 100 individual tax returns per year for members of the foreign community in Japan. This is proof of our solid reputation and experience.

■Global Strategies

International tax laws are becoming increasingly complex and wide-ranging, and this is impacting the plans and operations of cross-border enterprises. Companies need to structure their operations to minimize taxation on earnings and capital. Nakamoto & Company is equipped to guide their clients through the maze of tax legislation facing today's corporations.



Turning Ordinary Services into Extraordinary Experiences

Achieving and maintaining client satisfaction continues to be among Nakamoto & Company's highest priorities. Our CPAs and other professionals strive to serve clients by gaining a deep understanding of their goals, expectations, and desires. We make every effort to adapt its services to the unique requirements of each and every customer. We start with a strong foundation of traditional service and add value through customized attention. By adapting our general service to the specialized needs of our customers, we transform an ordinary service into an extraordinary and invaluable business experience.



Visit our web site.

www.nakamotokaikei.com



»» Contacts

E-Mail : brc@nakamotokaikei.com
<http://www.nakamotokaikei.com>

Tokyo: Tel. 03(3234)0396
BM Nagano Bldg. 4F, Nibancho 10-3 Chiyoda-ku, Tokyo 102-0084

Osaka: Tel. 06(6225)1220
Edobori Center Bldg. 9F, Edobori Nishi-ku, Osaka 550-0002

Nakamoto&Company